

VI SEC SET D45 micro hi-Q per

On-the-dot dosage with maximum volumetric precision



DESCRIPTION:

This set of high-quality dosing components is consisting of an injection-moulded rotor drive shaft unit, a precision-machined stator (hi-Q per), two shaft seal rings (hi-Q seal) including matching O-rings, and two ball bearings.

The single-stage rotor unit ensures consistently reliable and reproducible results across a wide range of pumping applications and a variety of media. The flexible plastic shaft impresses with its high flexibility and, at the same time, outstanding durability, ensuring long-lasting and stable operation. The internal geometry of the stator is based on the proven eccentric screw pump principle and enables particularly smooth and gentle dosing.

A key advantage of this set is its excellent suitability for precise dosing tasks: even the smallest quantities of media can be conveyed accurately, fully volumetrically and continuously – both forwards and backwards. The system therefore offers a high degree of process reliability, repeatability and flexibility, making it ideal for demanding dosing applications across a wide range of areas.

RANGE OF USES:

- an-aerobic media
- adhesives
- silicones
- grease
- oils

SET ORDER NUMBER:

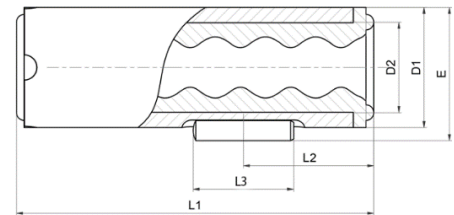
VI SEC SET D45 micro hi-Q per: P60.2S04D45

TECHNICAL DATA ROTOR:

Dimensions (rotor x length)	Ø5.4 mm x 108 mm
Weight	approx. 19 g
Material Rotor	hi-Q rotar
Item no.:	P60.21D45

TECHNICAL DATA STATOR:

Dimensions	Ø11.95 mm x 35.5 mm
Weight	approx. 5.6 g
Dosing volume	approx. 0.05 cc/rev
Dosing accuracy ⁽¹⁾	± 1%
Repeatability	> 99%
Min. dosing quantity	approx. 0.004 cc
Volume flow ⁽²⁾	0.05 to 6.0 cc/min
Min. operating pressure	0 bar
Max. operating pressure	0 to 6 bar
Max. dosing pressure	16 to 21 bar
Available materials	hi-Q per / hi-per Item no.: P60.04D45

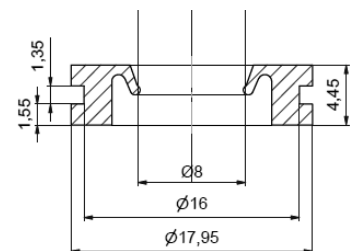


D1 = Ø 11,95 mm L1 = 35,50 mm L3 = 10,00 mm
D2 = Ø 9,00 mm L2 = 13,00 mm E = 13,25 mm

- (1) Volumetric dosing is related as absolute deviation to one revolution of the dispenser.
Depends on the viscosity of the dosing medium
- (2) Volume flow is dependent on viscosity and primary pressure.

TECHNICAL DATA SHAFT SEAL:

Dimensions	Ø approx. 18 mm / Ø 8 mm
Weight	approx. 1.10 g
Material	hi-Q seal
Specific Gravity	1.72 – 1.76 g/cm ³
Continuous operating temp	(-)110 – (+)155 °C
Item no.:	P30.11000.01



The shaft seals specially manufactured by SEC are perfectly suited for applications with our VISEC rotor units of the D-series. Installed in the seal housing, they ensure a smooth metering process, without leaks.

A matching round FFKM cord ring is supplied with each shaft seal.